

SMILE IN

08-Aug.-2016

1.0

LED 4/6W | 350-500mA | 9Vf | COB 2-step | excl. power supply

CE IP20 0.3m E A B

3000K | >80CRI | 280-370lm

white texture
aluminium brushed

326151W4
702151L4

1.0

LED 4/6W | 350-500mA | 9Vf | COB 2-step | excl. power supply

CE IP65 0.3m E A B

3000K | >80CRI | 280-370lm

dark grey texture (only for exterior use)
white texture

702151D4
702151W4

2.0

LED 4/6W | 350-500mA | 9Vf | COB 2-step | excl. power supply

CE IP20 0.3m E A B

3000K | >80CRI | 280-370lm

white texture
aluminium brushed

326251W4
703151L4

2.0

LED 4/6W | 350-500mA | 9Vf | COB 2-step | excl. power supply

CE IP65 0.3m E A B

3000K | >80CRI | 280-370lm

dark grey texture (only for exterior use)
white texture

703151D4
703151W4

ALWAYS USE

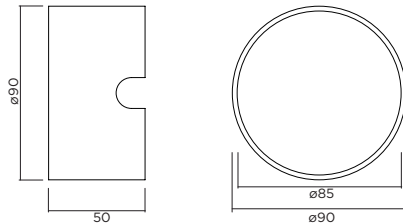
for power supplies see our catalogue

OPTIONAL

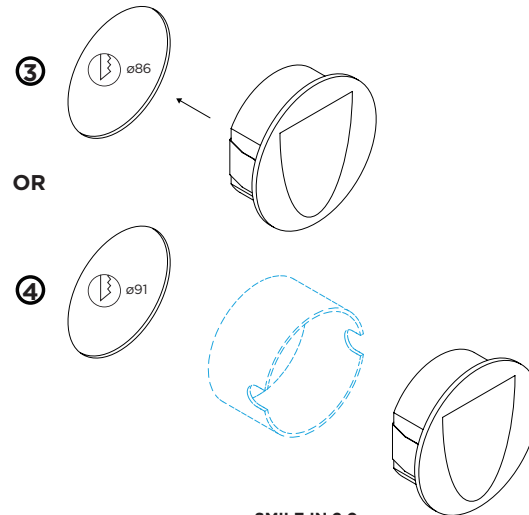
recessed housing

90012030

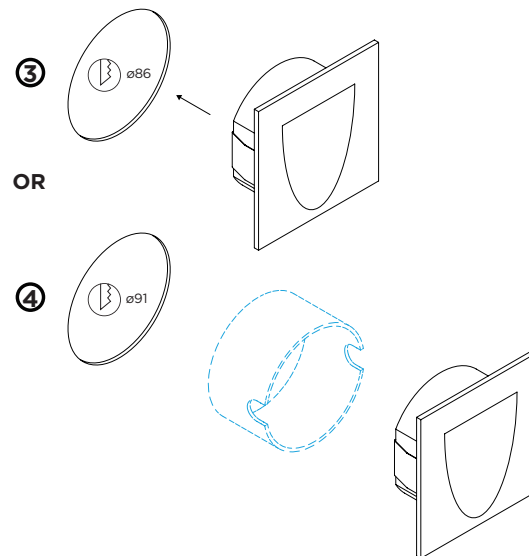
OPTIONAL, (ORDER SEPARATELY)
recessed housing dimensions



SMILE IN 1.0



SMILE IN 2.0



DIMENSIONS



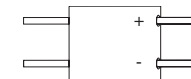
MOUNTING INSTRUCTION

- 1 Make a hole in the ceiling according to the prescribed dimensions.

POWER CONNECTION

- 2 Use connector or cut wires to connect to power supply

Interior: STANDARD version



Exterior: WATERPROOF Connection



- 3 Insert the fixture in the hole.

OR

- 4 Insert the fixture in the hole, by using a recessed housing

